



SuPPoRT
Colorado

Supporting Perinatal substance use Prevention,
Recovery, and Treatment in Colorado



Indications for Toxicology Testing In Colorado Birthing Facilities

To minimize bias, discrimination, and variability in the use of toxicology testing for pregnant or birthing persons and their infants, *Indications for Toxicology Testing* describes limitations of and appropriate clinical indications for toxicology testing.



Indications for Toxicology Testing is intended to serve as guidance for Colorado birthing facilities on clinical best practice principles related to toxicology testing. It should be used to inform the development of a clear and transparent toxicology testing policy at a birthing facility or health system, and can be adapted to meet an individual facility's needs.

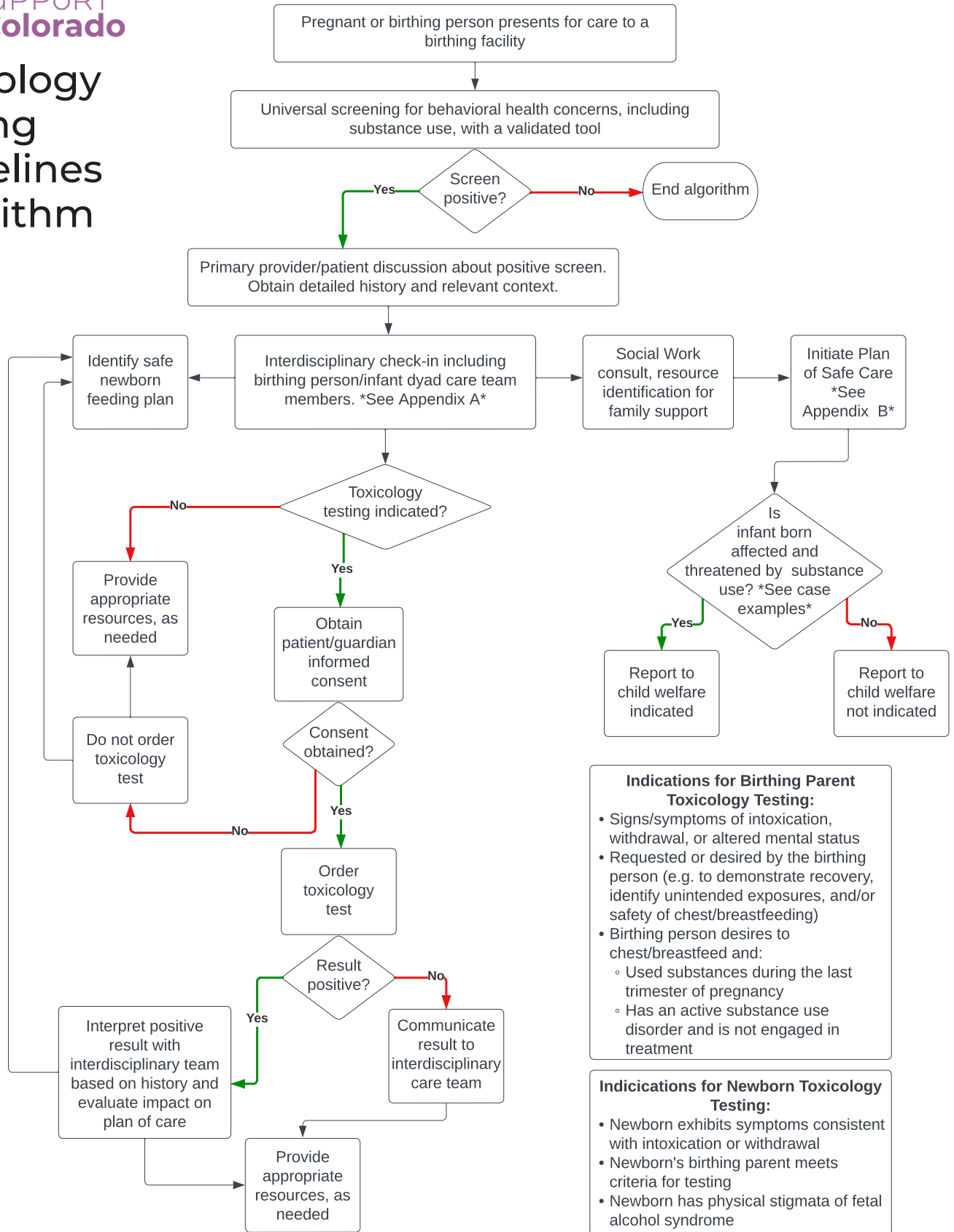
Download the BEST PRACTICE TEMPLATE today!

illuminatecolorado.org/project/support-colorado



illuminate
Building Brighter Childhoods

Toxicology Testing Guidelines Algorithm



- Indications for Birthing Parent Toxicology Testing:**
- Signs/symptoms of intoxication, withdrawal, or altered mental status
 - Requested or desired by the birthing person (e.g. to demonstrate recovery, identify unintended exposures, and/or safety of chest/breastfeeding)
 - Birthing person desires to chest/breastfeed and:
 - Used substances during the last trimester of pregnancy
 - Has an active substance use disorder and is not engaged in treatment

- Indications for Newborn Toxicology Testing:**
- Newborn exhibits symptoms consistent with intoxication or withdrawal
 - Newborn's birthing parent meets criteria for testing
 - Newborn has physical stigmata of fetal alcohol syndrome